

**DANRE Idb1a Antibody (C-term)**  
**Purified Rabbit Polyclonal Antibody (Pab)**  
**Catalog # Azb18695a****Specification**

---

**DANRE Idb1a Antibody (C-term) - Product Information**

Application	WB,E
Primary Accession	<a href="#">O73715</a>
Reactivity	Zebrafish
Host	Rabbit
Clonality	Polyclonal
Isotype	Rabbit IgG
Calculated MW	42715
Antigen Region	336-368

**DANRE Idb1a Antibody (C-term) - Additional Information****Gene ID** 30579**Other Names**

LIM domain-binding protein 1-A, LDB-1-A, LIM domain-binding protein 4, LDB-4, zLdb4, ldb1a, ldb4

**Target/Specificity**

This DANRE Idb1a antibody is generated from a rabbit immunized with a KLH conjugated synthetic peptide between 336-368 amino acids from the C-terminal region of DANRE Idb1a.

**Dilution**

WB~~1:1000

E~~Use at an assay dependent concentration.

**Format**

Purified polyclonal antibody supplied in PBS with 0.09% (W/V) sodium azide. This antibody is purified through a protein A column, followed by peptide affinity purification.

**Storage**

Maintain refrigerated at 2-8°C for up to 2 weeks. For long term storage store at -20°C in small aliquots to prevent freeze-thaw cycles.

**Precautions**

DANRE Idb1a Antibody (C-term) is for research use only and not for use in diagnostic or therapeutic procedures.

**DANRE Idb1a Antibody (C-term) - Protein Information****Name** ldb1a**Synonyms** ldb4

**Function** Binds to the LIM domain of a wide variety of LIM domain- containing transcription factors.

**Cellular Location**

Nucleus.

**Tissue Location**

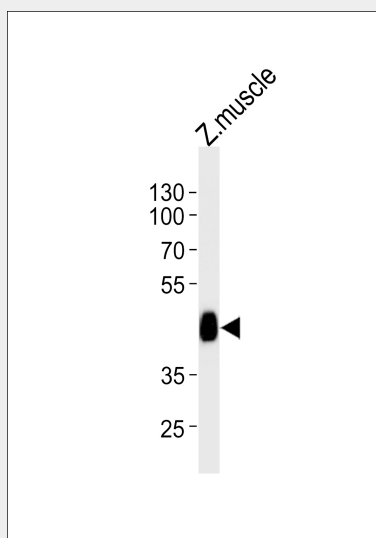
Expressed ubiquitously in the embryo and adult.

**DANRE Idb1a Antibody (C-term) - Protocols**

Provided below are standard protocols that you may find useful for product applications.

- [Western Blot](#)
- [Blocking Peptides](#)
- [Dot Blot](#)
- [Immunohistochemistry](#)
- [Immunofluorescence](#)
- [Immunoprecipitation](#)
- [Flow Cytometry](#)
- [Cell Culture](#)

**DANRE Idb1a Antibody (C-term) - Images**



Western blot analysis of lysate from zebra fish muscle tissue lysate, using DANRE Idb1a Antibody (C-term)(Cat. #Azb18695a). Azb18695a was diluted at 1:1000. A goat anti-rabbit IgG H&L(HRP) at 1:5000 dilution was used as the secondary antibody. Lysate at 35ug.

**DANRE Idb1a Antibody (C-term) - Background**

Binds to the LIM domain of a wide variety of LIM domain- containing transcription factors.

**DANRE Idb1a Antibody (C-term) - References**

Toyama R.,et al.Mech. Dev. 71:197-200(1998).  
Tran Y.H.,et al.J. Biochem. 140:105-119(2006).